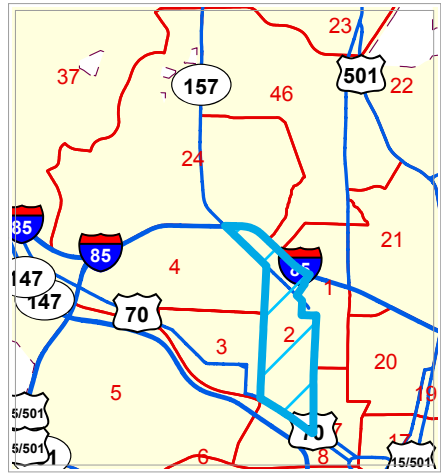


Durham County Atlas of Voter Precincts

Precinct: 2



- Poling Sites
- Highways
- Public Streets
- Private Streets
- Alleys
- Ramps
- Precinct Boundaries
- 10,000' Atlas Page Grid
- 2,500' Index Locator Grid
- Parks
- Durham County Line
- City of Durham
- Chapel Hill (in Durham Co.)
- Morrisville (in Durham Co.)
- Raleigh (in Durham Co.)



Map Prepared by Durham GIS on Jul 31, 2008
 Information depicted hereon is for reference purposes only and is compiled from the best available sources. The City of Durham/Durham County assumes no responsibility for errors arising from use or misuse of this map.

1 inch equals 1,348 feet

Context Map